

## Can you identify the parts of a full size corn plant?

Draw a line from each named part of the corn plant listed below to the appropriate part of the corn plant pictured at right.

- Ear
- Leaf
- Brace Roots
- Silk
- Soil Level
- Tassel
- Nodal Roots
- Stalk



### Can you identify the parts of a corn seedling (ankle high)?

Radicle

Coleoptile sheath

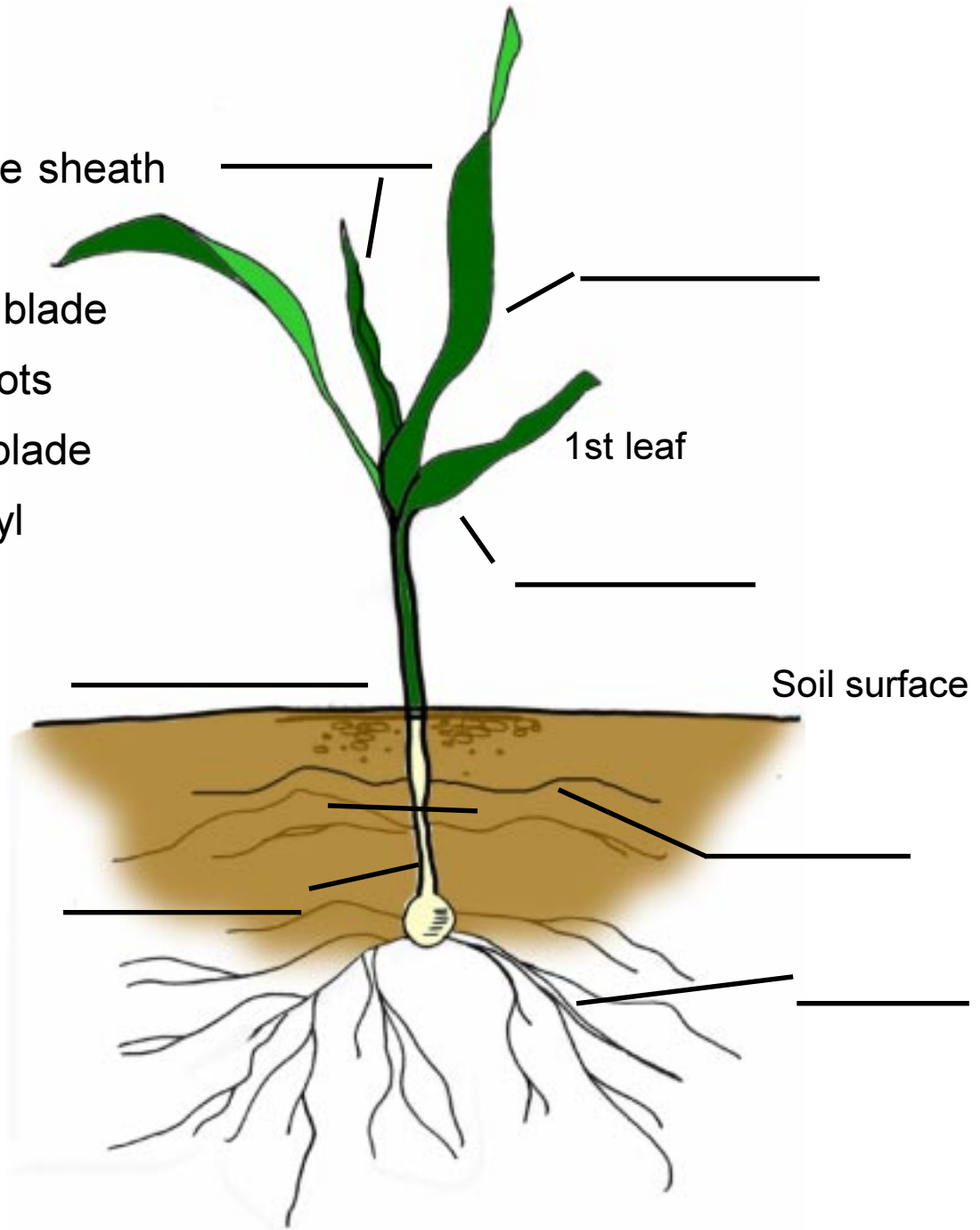
Whorl

2nd leaf blade

Nodal roots

1st leaf blade

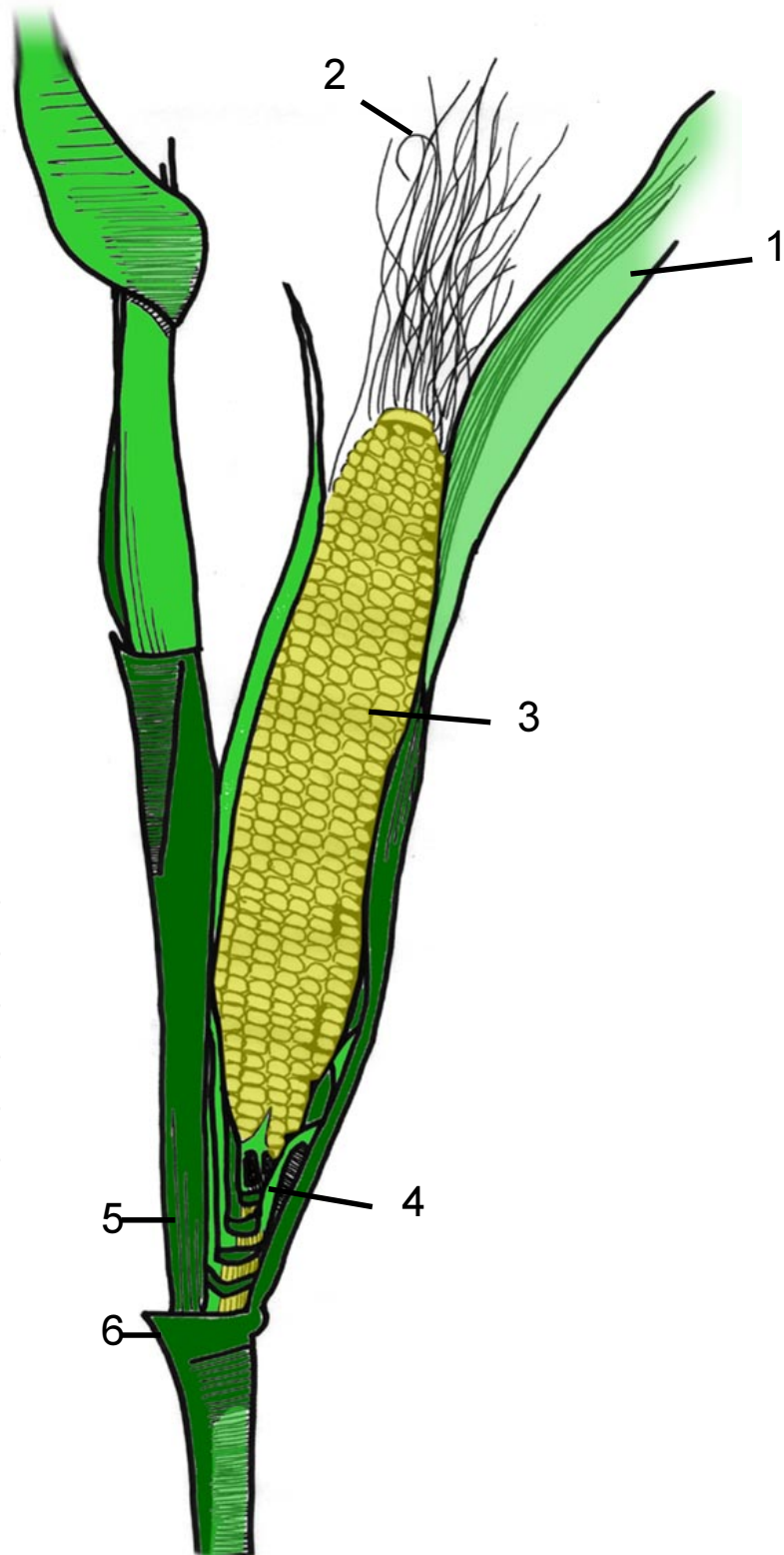
Mesocotyl



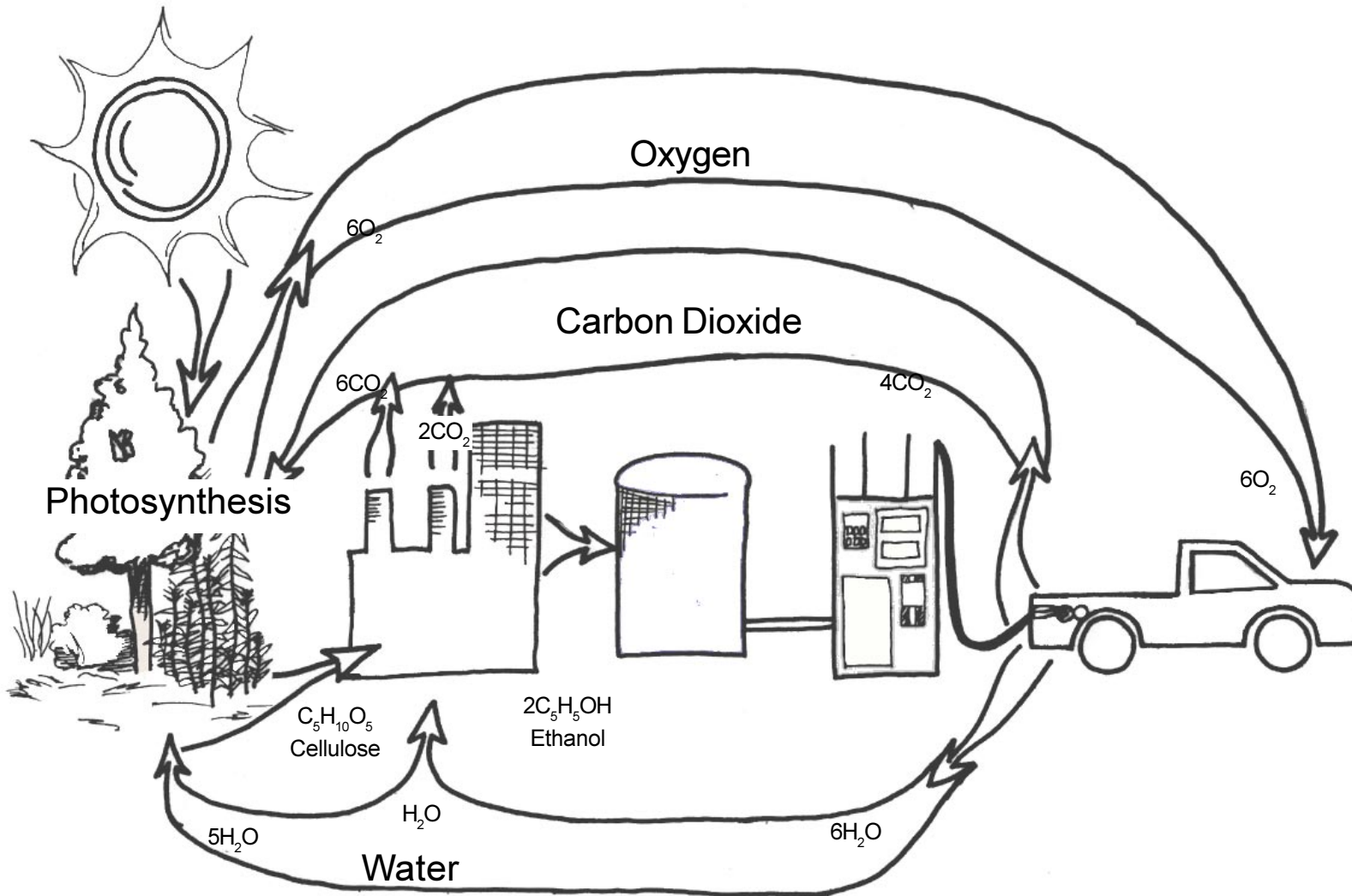
### Can you identify the parts of a corn ear?

- Silks
- Ear leaf
- Stem
- Kernels
- Ear node
- Husks

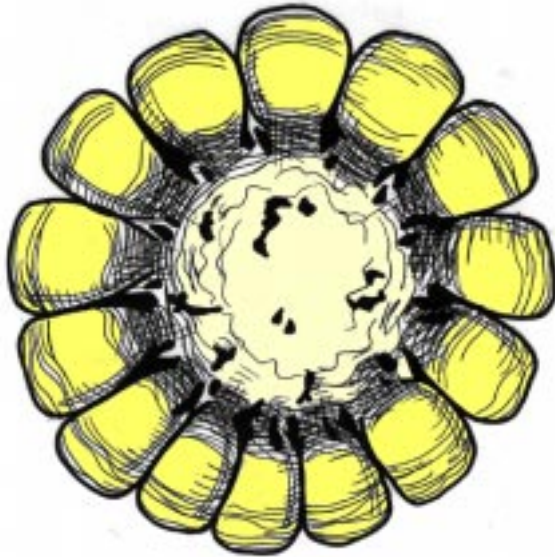
- 1. \_\_\_\_\_
- 2. \_\_\_\_\_
- 3. \_\_\_\_\_
- 4. \_\_\_\_\_
- 5. \_\_\_\_\_
- 6. \_\_\_\_\_



# Carbon Dioxide Recycled With Ethanol Fuel



## Count the kernels on a cob



Count the number of rows  
(kernels around the cob)

answer: \_\_\_\_\_

Count the number of kernels  
per row

answer: \_\_\_\_\_

Older students: Total number  
of kernels on the cob

answer: \_\_\_\_\_

